



**承接各类非标产品**

UNDERTAKE ALL KINDS OF  
NON-STANDARD PRODUCTS



销售热线 (Sales Hotline) : 0379-60697782  
13663793011 (同微信 Wechat)

传 真 (Fax) : 0379-60697786

邮 箱 (Mail) : lyhgzc@163.com

网 址 (Website) : www.lyhgzc.com

办公地址: 中国·洛阳市涧西区云峰国际大厦B座1917室

Office Add: Room 1917, Block B, Yunfeng International, Jianxi District,  
Luoyang City, China

工厂地址: 中国·洛阳市宜阳县产业集聚区轴承专业园

Factory Add: Bearing Professional Park in Yiyang Industrial cluster district,  
Luoyang City, China



# 洛阳恒冠轴承科技有限公司

LUOYANG HENG GUAN BEARING TECHNOLOGY CO., LTD.



恒冠轴承 HENGGUAN  
智 造未来

“wisdom”to build the future,

只做优质产品和服务的提供者  
we only do high-quality products and professional  
service providers!

回转支承/转盘轴承/大型推力球轴承

Slewing bearing / Slewing ring / large thrust ball bearing

## 公司简介

### Company profile

洛阳恒冠轴承科技有限公司，座落于美丽的牡丹花城、号称“轴承之乡”的中国十三朝古都—洛阳。是一家集专业设计、研发、生产、销售及服务于一体的回转支承/转盘轴承综合型实体企业。依托于洛阳老牌轴承加工基地得天独厚的优势，公司凝聚了一批经验丰富的轴承设计人员和操作娴熟的一线生产工人，加上先进的生产加工设备及检测工具，从根源上保证了产品的质量及相关服务。

我公司主要生产直径50-9800mm的回转支承/转盘轴承及各种高精度回转支承、大型推力球轴承、非标异型轴承等产品，精度涵盖P0、P6、P5、P4四个等级，产品类型包括单排四点接触球结构、交叉圆柱滚子结构、三排圆柱滚子结构、双排球结构、球柱联合结构、薄壁法兰结构、大型推力球结构等。产品广泛应用于新能源、医疗、游乐、自动化、起重，建筑、矿山、冶金、港口、纺织、船舶、环保、航空航天、风力发电等领域。公司产品销往全国各地并出口欧洲、美洲、亚洲等多个国家和地区，得到广大用户的赞同和认可。

公司一贯坚持“以人为本、客户至上、技术创新、品质求精”的价值理念；以“务实、创新、团结、高效”的企业开拓精神；一切以客户需求为中心，对不同的客户实行个性化优化设计及定制化柔性生产，来满足客户的精准需求，力求客户得到高性价比的产品和服务，以实现客我双方互利共赢的长期发展战略目标。恒冠轴承，“智”造未来，我们只做优质产品和服务的提供者！

Luoyang Hengguan Bearing Technology Co., Ltd. is located in the beautiful Peony Flower City, known as the “Bearing Town” of China’s thirteenth ancient capital - Luoyang. Is a professional design, research and development, production, sales and service in one of the slewing bearing integrated entity enterprise. Relying on the unique advantages of Luoyang old brand bearing processing base, the company has gathered a group of experienced bearing designers and skilled first-line production workers, together with advanced production and processing equipment and testing tools, to ensure the quality of products and related services from the root.

Our company mainly produces 50-9800mm diameter slewing bearing and various high precision slewing bearings, large thrust ball bearings, non-standard special-shaped bearings and other products, The accuracy covers P 0, P 6, P 5, P 4 four grades, product types include single row four-point contact ball structure, cross cylindrical roller structure, three row cylindrical roller structure. Double row ball structure, double row roller ball combination structure, thin-wall flange structure, large thrust ball structure, etc. Products are widely used in new energy, medical, recreation, automation, lifting, construction, mining, metallurgy, port, textile, shipping, environmental protection, aerospace, wind power and other fields. The company’s products are sold all over the country and exported to Europe, America, Asia and other countries and regions, and have won the approval and recognition of the vast number of users.

The company has always adhered to the value concept of “people-oriented, customer-oriented, technological innovation, quality improvement”, “pragmatic, innovative, united, efficient” enterprise pioneering spirit; The customer all needs as the center, to implement personalized optimization design and customized flexible production for different customers to meet the precise needs of customers. In order to achieve the long-term development strategic goal of mutual benefit and win-win between customers and us, we strive to provide customers with high cost-effective products and services. Heng Guan bearings, “wisdom” to build the future, we only do high-quality products and professional service providers!



# 企业文化

## Enterprise culture



**愿景:** 打造中国优质轴承制造者和产品方案提供者;  
**使命:** 为员工搭建实现梦想的平台, 为客户提供实现价值的产品, 为世界创造更加美好转动的服务;  
**精神:** 务实, 创新, 团结, 高效;  
**价值观:** 以人为本、客户至上、技术创新、品质求精、团队合作、尊重员工、分享成果;  
**服务承诺:** 免费提供售前、售中、售后技术咨询服务, 一次合作, 终生朋友!

**Vision:** Build up China's high quality bearing manufacturer and product solution provider;

**Mission:** To build a platform for employees to realize their dreams, to provide customers with products to realize their values, and to create better and better services for the world;

**Spirit:** Pragmatic, Innovative, United and Efficient.

**Values:** People-oriented, Customer-oriented, Technological innovation, Quality improvement, teamwork, Respect for employees, Sharing results;

**Service commitment:** Free pre-sale, in-sale and after-sale technical advisory services, A cooperation, lifelong friends!

# 回转支承类型和系列一

## Types and series of slewing bearings One

《JB/T10471-2004》标准回转支承编号方法:

JB/T10471-2004 standard slewing bearing numbering method:

X X	X	XX	XXXX
--	-	--	----
(1)	(2)	(3)	(4)

(1) 结构型式:

- 01-四点接触球式回转支承
- 02-双排球式回转支承
- 11-单排交叉滚子式回转支承
- 13-三排圆柱滚子组合回转支承

(2) 传动方式

- 0-无齿式
- 1-渐开线圆柱齿轮外啮合小模数
- 2-渐开线圆柱齿轮外啮合大模数
- 3-渐开线圆柱齿轮内啮合小模数
- 4-渐开线圆柱齿轮内啮合大模数

(3) 滚动体 (钢球或者滚柱) 直径

(4) 滚道中心圆直径

(1) The types of products

- 01-Single row four point contact ball slewing bearing
- 02-Double Row Ball slewing bearing
- 11-Single row cross roller slewing bearing
- 13-Three row roller slewing bearing

(2) Meshing mode

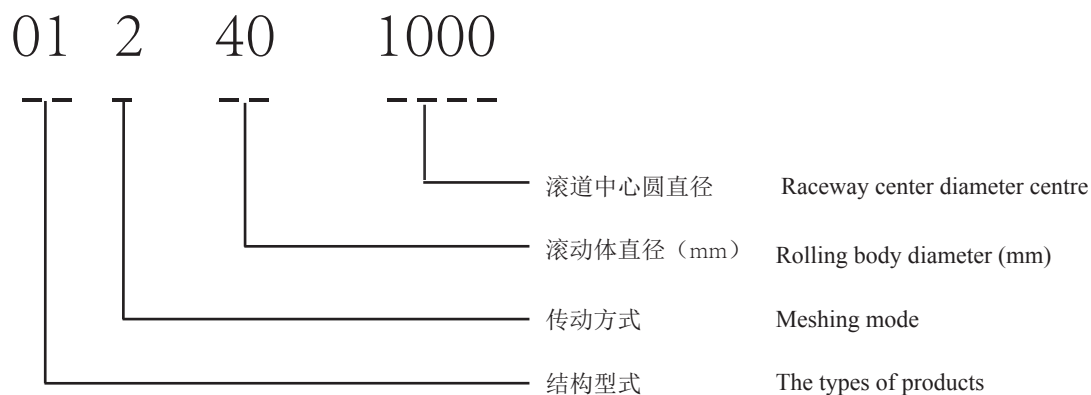
- 0-No gear type
- 1-External gear small module
- 2-External gear large module
- 3-Internal gear small module
- 4-Internal gear large module

(3) Diameter of rolling body (steel ball or cylindrical roller) mm

(4) Raceway center diameter

### 基本型号规格举例

#### The examples of basic models and specifications



因此: 该型号规格表示为单排四点接触球外齿式 (大模数) 回转支承, 钢球直径40mm, 滚道中心圆直径1000mm

Therefore, the specifications of this type are expressed as single row four-point contact ball external gear (large modulus) slewing bearing, steel ball diameter 40mm, raceway center diameter 1000mm.

# 单排四点接触球式回转支承(01系列)

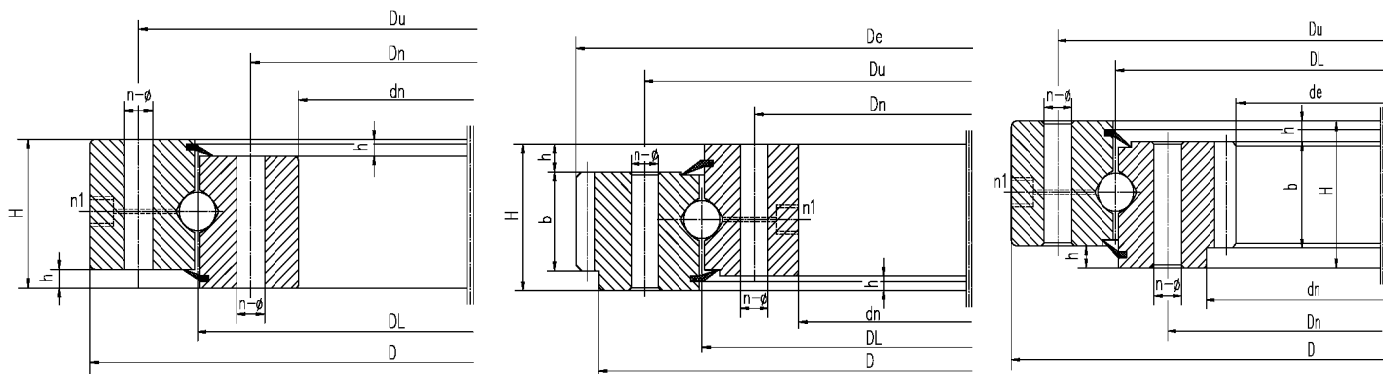
## Single row four point contact ball slewing bearing (01 Series)

### 结构特点、性能、适用范围

单排四点接触球式回转支承由两个座圈组成，结构紧凑、重量轻、钢球与圆弧滚道四点接触，能同时承受轴向力、径向力和倾翻力矩。回转式输送机、焊接操作机、中小型起重机和挖掘机等工程机械均可选用。

### Structural characteristics, performance and scope of application

The single row four-point contact ball slewing bearing is composed of two seat rings. It has compact structure, light weight, and four-point contact between steel ball and arc raceway. It can bear axial force, radial force and overturning moment at the same time. The construction machinery of rotary conveyor, welding manipulator, small and medium-sized crane and excavator can be selected.



轴承型号 Bearing type			外形尺寸 Boundary dimensions			安装孔尺寸 Mounting hole diameter				结构尺寸 Structure dimensions			齿轮参数 Gear parameters					质量 Mass kg		
无齿式 Non-gear type	外齿式 External gear type	内齿式 Internal gear type	D	dn	H	Du	Dn	n	φ	DL	h	n1	m	外齿式 Ext gear		内齿式 Int gear			b	x
														De mm	Z	de mm	Z			
010 • 30 • 500 • **	011 • 30 • 500 • **	013 • 30 • 500 • **	602	398	80	566	434	20	18	500	10	4/M10X1	5	630	123	365	74	60	+0.5	75.8
	012 • 30 • 500 • **	014 • 30 • 500 • **											6	630	102	366	62	60	+0.5	75.8
010 • 30 • 560 • **	011 • 30 • 560 • **	013 • 30 • 560 • **	662	458	80	626	494	20	18	560	10	4/M10X1	5	690	135	425	86	60	+0.5	94
	012 • 30 • 560 • **	014 • 30 • 560 • **											6	690	112	426	72	60	+0.5	94
010 • 30 • 630 • **	011 • 30 • 630 • **	013 • 30 • 630 • **	732	528	80	696	564	24	18	630	10	4/M10X1	6	774	126	492	83	60	+0.5	110
	012 • 30 • 630 • **	014 • 30 • 630 • **											8	776	94	488	62	60	+0.5	110
010 • 30 • 710 • **	011 • 30 • 710 • **	013 • 30 • 710 • **	812	608	80	776	644	24	18	710	10	4/M10X1	6	852	139	570	96	60	+0.5	120
	012 • 30 • 710 • **	014 • 30 • 710 • **											8	856	104	568	72	60	+0.5	120
010 • 40 • 800 • **	011 • 40 • 800 • **	013 • 40 • 800 • **	922	678	100	878	722	30	22	800	10	6/M10X1	8	968	118	632	80	80	+0.5	256
	012 • 40 • 800 • **	014 • 40 • 800 • **											10	970	94	630	64	80	+0.5	256
010 • 40 • 900 • **	011 • 40 • 900 • **	013 • 40 • 900 • **	1022	778	100	978	822	30	22	900	10	6/M10X1	8	1064	130	736	93	80	+0.5	240
	012 • 40 • 900 • **	014 • 40 • 900 • **											10	1070	104	730	74	80	+0.5	240
010 • 40 • 1000 • **	011 • 40 • 1000 • **	013 • 40 • 1000 • **	1122	878	100	1078	922	36	22	1000	10	6/M10X1	10	1190	116	820	83	80	+0.5	305
	012 • 40 • 1000 • **	014 • 40 • 1000 • **											12	1188	96	816	69	80	+0.5	305
010 • 40 • 1120 • **	011 • 40 • 1120 • **	013 • 40 • 1120 • **	1242	998	100	1198	1042	36	22	1120	10	6/M10X1	10	1300	127	940	95	80	+0.5	300
	012 • 40 • 1120 • **	014 • 40 • 1120 • **											12	1308	106	936	79	80	+0.5	300
010 • 45 • 1250 • **	011 • 45 • 1250 • **	013 • 45 • 1250 • **	1390	1110	110	1337	1163	40	26	1250	10	6/M10X1	12	1452	118	1044	88	90	+0.5	420
	012 • 45 • 1250 • **	014 • 45 • 1250 • **											14	1456	101	1036	75	90	+0.5	420
010 • 45 • 1400 • **	011 • 45 • 1400 • **	013 • 45 • 1400 • **	1540	1260	110	1487	1313	40	26	1400	10	6/M10X1	12	1608	131	1188	100	90	+0.5	480
	012 • 45 • 1400 • **	014 • 45 • 1400 • **											14	1610	112	1190	86	90	+0.5	480
010 • 45 • 1600 • **	011 • 45 • 1600 • **	013 • 45 • 1600 • **	1740	1460	110	1687	1513	45	26	1600	10	8/M10X1	14	1820	127	1386	100	90	+0.5	550
	012 • 45 • 1600 • **	014 • 45 • 1600 • **											16	1824	111	1376	87	90	+0.5	550
010 • 45 • 1800 • **	011 • 45 • 1800 • **	013 • 45 • 1800 • **	1940	1660	110	1887	1713	45	26	1800	10	8/M10X1	14	2016	141	1568	113	90	+0.5	610
	012 • 45 • 1800 • **	014 • 45 • 1800 • **											16	2016	123	1568	99	90	+0.5	610
010 • 60 • 2000 • **	011 • 60 • 2000 • **	013 • 60 • 2000 • **	2178	1825	144	2110	1891	48	33	2000	12	8/M10X1	16	2272	139	1728	109	120	+0.5	1100
	012 • 60 • 2000 • **	014 • 60 • 2000 • **											18	2268	123	1728	97	120	+0.5	1100
010 • 60 • 2240 • **	011 • 60 • 2240 • **	013 • 60 • 2240 • **	2418	2065	144	2350	2131	48	33	2240	12	8/M10X1	16	2496	153	1984	125	120	+0.5	1250
	012 • 60 • 2240 • **	014 • 60 • 2240 • **											18	2502	136	1980	111	120	+0.5	1250
010 • 60 • 2500 • **	011 • 60 • 2500 • **	013 • 60 • 2500 • **	2678	2325	144	2610	2391	56	33	2500	12	8/M10X1	18	2772	151	2232	125	120	+0.5	1400
	012 • 60 • 2500 • **	014 • 60 • 2500 • **											20	2780	136	2220	112	120	+0.5	1400
010 • 60 • 2800 • **	011 • 60 • 2800 • **	013 • 60 • 2800 • **	2978	2625	144	2910	2691	56	33	2800	12	8/M10X1	18	2769.7	151	—	—	120	+0.5	1400
	012 • 60 • 2800 • **	014 • 60 • 2800 • **											18	3078	168	2520	141	120	+0.5	1600
010 • 75 • 3150 • **	011 • 75 • 3150 • **	013 • 75 • 3150 • **	3376	2922	174	3286	3014	56	45	3150	12	8/M10X1	20	3080	151	2520	127	120	+0.5	1600
	012 • 75 • 3150 • **	014 • 75 • 3150 • **											22	3480	171	2820	142	150	+0.5	2800
010 • 75 • 3550 • **	011 • 75 • 3550 • **	013 • 75 • 3550 • **	3776	3322	174	3686	3414	56	45	3550	12	8/M10X1	22	3476	115	2816	129	150	+0.5	2800
	012 • 75 • 3550 • **	014 • 75 • 3550 • **											20	3880	191	3220	162	150	+0.5	3200
010 • 75 • 4000 • **	011 • 75 • 4000 • **	013 • 75 • 4000 • **	4226	3772	174	4136	3864	60	45	4000	12	10/M10X1	22	3894	174	3212	147	150	+0.5	3200
	012 • 75 • 4000 • **	014 • 75 • 4000 • **											22	4334	194	3652	167	150	+0.5	3600
010 • 75 • 4500 • **	011 • 75 • 4500 • **	013 • 75 • 4500 • **	4726	4272	174	4636	4364	60	45	4500	12	10/M10X1	25	4350	171	3650	147	150	+0.5	3600
	012 • 75 • 4500 • **	014 • 75 • 4500 • **											22	4840	271	4158	190	150	+0.5	4000
													25	4850	191	4150	167	150	+0.5	4000

# 单排交叉滚柱式回转支承 (11系列)

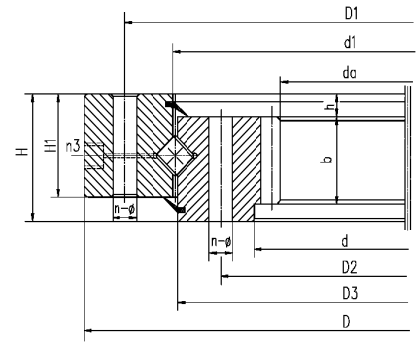
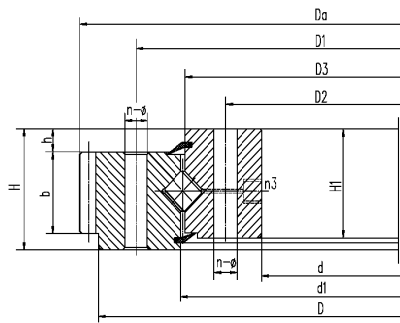
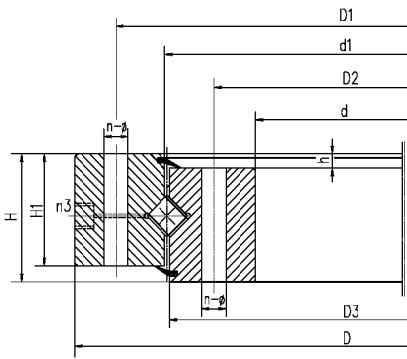
## Single row cross roller slewing bearing (11 series)

结构特点、性能、适用范围

Structural characteristics, performance and scope of application

单排交叉滚柱式回转支承, 由两个座圈组成, 结构紧凑、重量轻、制造精度高, 装配间隙小, 对安装精度要求高, 滚柱为1:1交叉排列, 能同时承受轴向力, 倾翻力矩和较大的径向力, 被广泛地用于起重运输、工程机械和军工产品上。

The Single row cross roller slewing bearing is composed of two seat rings. It has compact structure, light weight, high manufacturing accuracy, small assembly gap and high requirement for installation accuracy. Rollers are 1:1 cross-arranged. It can bear axial force, overturning moment and large radial force at the same time. It is widely used in lifting transportation, construction machinery and military products.



轴承型号 Bearing type			外形尺寸 Boundary dimensions			安装孔尺寸 Mounting hole diameter			结构尺寸 Structure dimensions					齿轮参数 Gear parameters					质量 Mass kg			
无齿式 Non-gear type	外齿式 External gear type	内齿式 Internal gear type	D	d	H	D1	D2	n	φ	D3	d1	H1	h	n3	m	外齿式 Ext gear		内齿式 Int gear		b	x	
																Da	Z	da				Z
			mm			mm			mm													
110 • 25 • 500 • **	111 • 25 • 500 • **	113 • 25 • 500 • **	602	398	75	566	434	20	18	499	501	65	10	4/M10X1	5	630	123	365	74	60	+0.5	80
	112 • 25 • 500 • **	114 • 25 • 500 • **													6	630	120	360	62	60	+0.5	80
110 • 25 • 560 • **	111 • 25 • 560 • **	113 • 25 • 560 • **	662	458	75	626	494	20	18	558.5	561.5	65	10	4/M10X1	5	690	135	425	86	60	+0.5	90
	112 • 25 • 560 • **	114 • 25 • 560 • **													6	690	112	426	72	60	+0.5	90
110 • 25 • 630 • **	111 • 25 • 630 • **	113 • 25 • 630 • **	732	528	75	696	564	24	18	628.5	631.5	65	10	4/M10X1	6	774	126	492	83	60	+0.5	100
	112 • 25 • 630 • **	114 • 25 • 630 • **													8	776	94	488	62	60	+0.5	100
110 • 25 • 710 • **	111 • 25 • 710 • **	113 • 25 • 710 • **	812	608	75	776	644	24	18	708.5	711.5	65	10	4/M10X1	6	852	139	570	96	60	+0.5	110
	112 • 25 • 710 • **	114 • 25 • 710 • **													8	856	104	568	72	60	+0.5	110
110 • 28 • 800 • **	111 • 28 • 800 • **	113 • 28 • 800 • **	922	678	82	878	722	30	22	798.5	801.5	72	10	6/M10X1	8	968	118	632	80	65	+0.5	170
	112 • 28 • 800 • **	114 • 28 • 800 • **													10	970	94	630	64	65	+0.5	170
110 • 28 • 900 • **	111 • 28 • 900 • **	113 • 28 • 900 • **	1022	778	82	978	822	30	22	898.5	901.5	72	10	6/M10X1	8	1064	130	736	93	65	+0.5	190
	112 • 28 • 900 • **	114 • 28 • 900 • **													10	1070	104	730	74	65	+0.5	190
110 • 28 • 1000 • **	111 • 28 • 1000 • **	113 • 28 • 1000 • **	1122	878	82	1078	922	36	22	998.5	1001.5	72	10	6/M10X1	10	1190	116	820	83	65	+0.5	210
	112 • 28 • 1000 • **	114 • 28 • 114 • **													12	1188	96	816	69	65	+0.5	210
110 • 28 • 1120 • **	111 • 28 • 1120 • **	113 • 28 • 1120 • **	1242	998	82	1198	1042	36	22	1118	1122	72	10	6/M10X1	10	1300	127	940	95	65	+0.5	230
	112 • 28 • 1120 • **	114 • 28 • 1120 • **													12	1308	106	936	79	65	+0.5	230
110 • 32 • 1250 • **	111 • 32 • 1250 • **	113 • 32 • 1250 • **	1390	1110	91	1337	1163	40	26	1248	1252	81	10	6/M10X1	12	1452	118	1044	88	75	+0.5	350
	112 • 32 • 1250 • **	114 • 32 • 1250 • **													14	1456	101	1036	75	75	+0.5	350
110 • 32 • 1400 • **	111 • 32 • 1400 • **	113 • 32 • 1400 • **	1540	1260	91	1487	1313	40	26	1398	1402	81	10	6/M10X1	12	1608	131	1188	100	75	+0.5	400
	112 • 32 • 1400 • **	114 • 32 • 1400 • **													14	1610	112	1190	86	75	+0.5	400
110 • 32 • 1600 • **	111 • 32 • 1600 • **	113 • 32 • 1600 • **	1740	1460	91	1687	1513	45	26	1598	1602	81	10	8/M10X1	14	1820	127	1386	100	75	+0.5	440
	112 • 32 • 1600 • **	114 • 32 • 1600 • **													16	1824	111	1376	87	75	+0.5	440
110 • 32 • 1800 • **	111 • 32 • 1800 • **	113 • 32 • 1800 • **	1940	1660	91	1887	1713	45	33	1798	1802	81	10	8/M10X1	14	2016	141	1568	113	75	+0.5	500
	112 • 32 • 1800 • **	114 • 32 • 1800 • **													16	2016	123	1568	99	75	+0.5	500
110 • 40 • 2000 • **	111 • 40 • 2000 • **	113 • 40 • 2000 • **	2178	1825	112	2110	1891	48	33	1998	2002	100	12	8/M10X1	12	—	—	1610	135	100	+0.5	912
	112 • 40 • 2000 • **	114 • 40 • 2000 • **													16	2272	139	1728	109	90	+0.5	900
110 • 40 • 2000 • 12	111 • 40 • 2000 • **	113 • 40 • 2000 • **	2178	1825	112	2110	1891	48	33	1991	1995	100	12	8/M10X1	18	2268	123	1728	97	90	+0.5	900
	112 • 40 • 2000 • **	114 • 40 • 2000 • **													—	—	—	—	—	—	—	767
110 • 40 • 2240 • **	111 • 40 • 2240 • **	113 • 40 • 2240 • **	2418	2065	112	2350	2131	48	33	2237.5	2242.5	100	12	8/M10X1	16	2496	153	1984	125	90	+0.5	1000
	112 • 40 • 2240 • **	114 • 40 • 2240 • **													18	2502	136	1980	111	90	+0.5	1000
110 • 40 • 2500 • **	111 • 40 • 2500 • **	113 • 40 • 2500 • **	2678	2325	112	2610	2391	56	33	2497.5	2502.5	100	12	8/M10X1	18	2772	151	2232	125	90	+0.5	876
	112 • 40 • 2500 • **	114 • 40 • 2500 • **													20	2780	136	2220	112	90	+0.5	876
110 • 40 • 2800 • **	111 • 40 • 2800 • **	113 • 40 • 2800 • **	2978	2625	112	2910	2691	56	33	2797.5	2802.5	100	12	8/M10X1	18	3078	168	2520	141	90	+0.5	1250
	112 • 40 • 2800 • **	114 • 40 • 2800 • **													20	3080	151	2520	127	90	+0.5	1250
110 • 50 • 3150 • **	111 • 50 • 3150 • **	113 • 50 • 3150 • **	3376	2922	134	3286	3014	56	45	3147.5	3152.5	122	12	8/M10X1	20	3480	171	2820	142	110	+0.5	2150
	112 • 50 • 3150 • **	114 • 50 • 3150 • **													22	3476	155	2816	129	110	+0.5	2150
110 • 50 • 3550 • **	111 • 50 • 3550 • **	113 • 50 • 3550 • **	3776	3322	134	3686	3414	56	45	3547.5	3552.5	122	12	8/M10X1	20	3880	191	3220	162	110	+0.5	2470
	112 • 50 • 3550 • **	114 • 50 • 3550 • **													22	3894	174	3212	147	110	+0.5	2470
110 • 50 • 4000 • **	111 • 50 • 4000 • **	113 • 50 • 4000 • **	4226	3772	134	4136	3864	60	45	3997.5	4002.5	122	12	10/M10X1	22	4334	194	3652	167	110	+0.5	2800
	112 • 50 • 4000 • **	114 • 50 • 4000 • **													25	4350	171	3650	147	110	+0.5	2800
110 • 50 • 4500 • **	111 • 50 • 4500 • **	113 • 50 • 4500 • **	4726	4272	134	4636	4364	60	45	4497.5	4502.5	122	12	10/M10X1	22	4940	217	4158	190	110	+0.5	3100
	112 • 50 • 4500 • **	114 • 50 • 4500 • **													25	4850	191	4150	167	110	+0.5	3100

# 双排球式回转支承(O2系列)

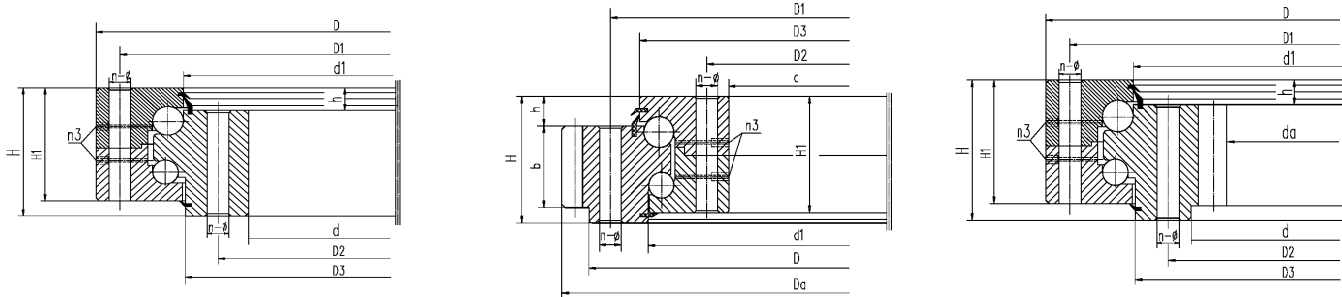
## Double row ball slewing bearing(O2 series)

### 结构特点、性能、适用范围

### Structural characteristics, performance and scope of application

双排球式回转支承具有三个座圈，钢球和隔离块可直接排入上下滚道，根据受力状况，安排了上下两排直径不同的钢球。这种开式装配非常方便，上下圆弧滚道的承载角都为75°，能承受很大的轴向力和倾翻力矩。当径向力大于0.1倍的轴向力时，滚道须特殊设计。双排球式回转支承的轴向、径向尺寸都比较大，结构紧固。特别适用于要求中等以上直径的塔式起重机，汽车起重机等装卸机械上。

The double row ball slewing bearing has three seat rings. The steel balls and isolators can be directly arranged into the upper and lower raceways. According to the stress conditions, the upper and lower rows of steel balls with different diameters are arranged. This kind of open assembly is very convenient. The bearing angle of the upper and lower arc raceway is 75 degrees. It can bear a great deal of axial force and overturning moment. When the radial force is greater than 0.1 times the axial force, the raceway must be specially designed. The axial and radial dimensions of the double row ball slewing bearing are relatively large and the structure is fastened. It is especially suitable for handling tower cranes, truck cranes and other loading machines that require medium or above diameters. military products.



轴承型号 Bearing type			外形尺寸 Boundary dimensions			安装孔尺寸 Mounting hole diameter			结构尺寸 Structure dimensions					齿轮参数 Gear parameters					质量 Mass kg			
无齿式 Non-gear type	外齿式 External gear type	内齿式 Internal gear type	D	d	H	D1	D2	n	φ	D3	d1	H1	h	n3	m	外齿式 Ext gear		内齿式 Int gear		b	x	
																Da mm	Z	da mm				Z
020 • 25 • 500 • **	021 • 25 • 500 • **	023 • 25 • 500 • **	616	384	106	580	420	20	18	523 (483)	517 (477)	96	26	4/M10X1	5	645	126	355	72	60	+0.5	100
	022 • 25 • 500 • **	024 • 25 • 500 • **													6	648	105	348	59	60	+0.5	100
020 • 25 • 560 • **	021 • 25 • 560 • **	023 • 25 • 560 • **	676	444	106	640	480	20	18	583 (543)	577 (537)	96	26	4/M10X1	5	705	138	415	84	60	+0.5	115
	022 • 25 • 560 • **	024 • 25 • 560 • **													6	708	115	408	69	60	+0.5	115
020 • 25 • 630 • **	021 • 25 • 630 • **	023 • 25 • 630 • **	746	514	106	710	550	24	18	653 (613)	647 (607)	96	26	4/M10X1	6	792	129	480	81	60	+0.5	130
	022 • 25 • 630 • **	024 • 25 • 630 • **													8	792	96	472	60	60	+0.5	130
020 • 25 • 710 • **	021 • 25 • 710 • **	023 • 25 • 710 • **	826	594	106	790	630	24	18	733 (693)	727 (687)	96	26	4/M10X1	6	864	141	558	94	60	+0.5	140
	022 • 25 • 710 • **	024 • 25 • 710 • **													8	864	105	552	70	60	+0.5	140
020 • 30 • 800 • **	021 • 30 • 800 • **	023 • 30 • 800 • **	942	658	124	898	702	30	22	828 (778)	822 (771)	114	29	6/M10X1	8	984	120	616	78	80	+0.5	200
	022 • 30 • 800 • **	024 • 30 • 800 • **													10	990	96	610	62	80	+0.5	200
020 • 30 • 900 • **	021 • 30 • 900 • **	023 • 30 • 900 • **	1042	758	124	998	802	30	22	928 (878)	922 (871)	114	29	6/M10X1	8	1088	133	712	90	80	+0.5	250
	022 • 30 • 900 • **	024 • 30 • 900 • **													10	1090	106	710	72	80	+0.5	250
020 • 30 • 1000 • **	021 • 30 • 1000 • **	023 • 30 • 1000 • **	1142	858	124	1098	902	36	22	1028 (978)	1022 (971)	114	29	6/M10X1	10	1200	117	810	82	80	+0.5	300
	022 • 30 • 1000 • **	024 • 30 • 1000 • **													12	1200	97	792	67	80	+0.5	300
020 • 30 • 1120 • **	021 • 30 • 1120 • **	023 • 30 • 1120 • **	1262	978	124	1218	1022	36	22	1148 (1098)	1142 (1091)	114	29	6/M10X1	10	1320	129	920	93	80	+0.5	340
	022 • 30 • 1120 • **	024 • 30 • 1120 • **													12	1320	107	912	77	80	+0.5	340
020 • 40 • 1250 • **	021 • 40 • 1250 • **	023 • 40 • 1250 • **	1426	1074	160	1374	1126	40	26	1286 (1218)	1282 (1214)	150	39	6/M10X1	12	1500	122	1008	85	90	+0.5	580
	022 • 40 • 1250 • **	024 • 40 • 1250 • **													14	1498	104	1008	73	90	+0.5	580
020 • 40 • 1400 • **	021 • 40 • 1400 • **	023 • 40 • 1400 • **	1576	1224	160	1524	1272	40	26	1436 (1368)	1432 (1364)	150	39	6/M10X1	12	1644	134	1152	97	90	+0.5	650
	022 • 40 • 1400 • **	024 • 40 • 1400 • **													14	1652	115	1148	83	90	+0.5	650
020 • 40 • 1600 • **	021 • 40 • 1600 • **	023 • 40 • 1600 • **	1776	1424	160	1724	1476	45	26	1636 (1568)	1632 (1564)	150	39	8/M10X1	14	1848	129	1344	97	90	+0.5	750
	022 • 40 • 1600 • **	024 • 40 • 1600 • **													16	1856	113	1344	85	90	+0.5	750
020 • 40 • 1800 • **	021 • 40 • 1800 • **	023 • 40 • 1800 • **	1976	1624	160	1924	1676	45	26	1836 (1768)	1832 (1764)	150	39	8/M10X1	14	2058	144	1540	111	90	+0.5	820
	022 • 40 • 1800 • **	024 • 40 • 1800 • **													16	2064	126	1536	97	90	+0.5	820
020 • 50 • 2000 • **	021 • 50 • 2000 • **	023 • 50 • 2000 • **	2215	1785	190	2149	1851	48	33	2038 (1968)	2032 (1962)	178	47	8/M10X1	16	2304	141	1696	107	120	+0.5	1150
	022 • 50 • 2000 • **	024 • 50 • 2000 • **													18	2304	125	1692	95	120	+0.5	1150
020 • 50 • 2240 • **	021 • 50 • 2240 • **	023 • 50 • 2240 • **	2455	2025	190	2389	2091	48	33	2278 (2208)	2272 (2202)	178	47	8/M10X1	16	2544	156	1936	122	120	+0.5	1500
	022 • 50 • 2240 • **	024 • 50 • 2240 • **													18	2556	139	1926	108	120	+0.5	1500
020 • 50 • 2500 • **	021 • 50 • 2500 • **	023 • 50 • 2500 • **	2715	2285	190	2649	2351	56	33	2538 (2468)	2532 (2462)	178	47	8/M10X1	18	2804	153	2196	123	120	+0.5	1500
	022 • 50 • 2500 • **	024 • 50 • 2500 • **													20	2820	138	2180	110	120	+0.5	1500
020 • 50 • 2800 • **	021 • 50 • 2800 • **	023 • 50 • 2800 • **	3015	2585	190	2949	2651	56	33	2838 (2768)	2832 (2762)	178	47	8/M10X1	18	3114	170	2484	139	120	+0.5	1900
	022 • 50 • 2800 • **	024 • 50 • 2800 • **													20	3120	153	2480	125	120	+0.5	1900
020 • 60 • 3150 • **	021 • 60 • 3150 • **	023 • 60 • 3150 • **	3428	2872	226	3338	2962	56	45	3198 (3108)	3192 (3102)	214	56	8/M10X1	20	3540	174	2760	139	150	+0.5	3300
	022 • 60 • 3150 • **	024 • 60 • 3150 • **													22	3542	158	2750	126	150	+0.5	3300
020 • 60 • 3550 • **	021 • 60 • 3550 • **	023 • 60 • 3550 • **	3828	3272	226	3738	3362	56	45	3598 (3508)	3592 (3502)	214	56	8/M10X1	20	3940	194	3160	159	150	+0.5	3700
	022 • 60 • 3550 • **	024 • 60 • 3550 • **													22	3938	176	3168	145	150	+0.5	3700
020 • 60 • 4000 • **	021 • 60 • 4000 • **	023 • 60 • 4000 • **	4278	3722	226	4188	3812	60	45	4048 (3958)	4042 (3952)	214	56	10/M10X1	22	4400	197	3608	165	150	+0.5	4200
	022 • 60 • 4000 • **	024 • 60 • 4000 • **													25	4400	173	3600	145	150	+0.5	4200
020 • 60 • 4500 • **	021 • 60 • 4500 • **	023 • 60 • 4500 • **	4778	4222	226	4688	4312	60	45	4548 (4458)	4542 (4452)	214	56	10/M10X1	22	4884	219	4114	188	150	+0.5	4700
	022 • 60 • 4500 • **	024 • 60 • 4500 • **													25	4900	193	4100	165	150	+0.5	4700



## 三排滚柱式回转支承(13系列)

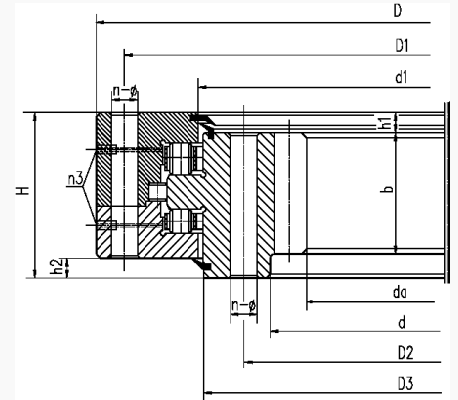
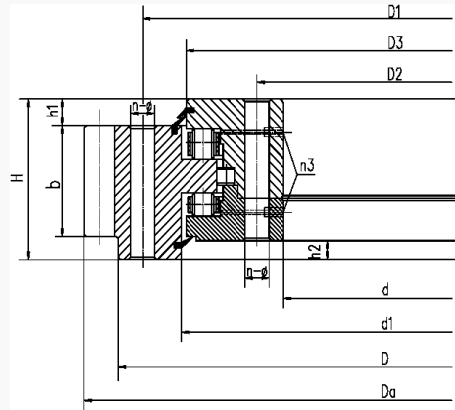
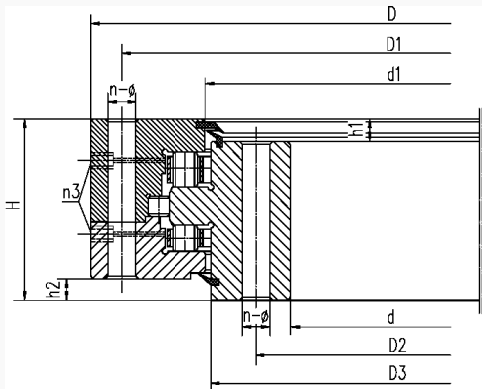
### Three row roller slewing bearing (13 series)

#### 结构特点、性能、适用范围

三排滚柱式回转支承有三个座圈，上下及径向滚道各自分开，使得每一排滚柱的负载都能确切地加以确定。能够同时承受各种载荷，是四种结构产品中承载能力最大的一种，轴、径向尺寸都较大，结构牢固，特别适用于要求较大直径的重型机械，如斗轮堆取料机、轮式起重机、船用起重机、港口起重机、钢包回转台及大吨位汽车起重机等机械上。

#### Structural characteristics, performance and scope of application

Three row roller slewing bearing have three seat rings, the upper and lower raceways and the radial raceways are separated, so that the load of each row of roller can be determined accurately. Being able to bear all kinds of loads at the same time, it is the largest one of the four structural products with large axial and radial dimensions and firm structure. It is especially suitable for heavy machinery requiring larger diameter, such as bucket wheel stacker and reclaimer, wheel crane, marine crane, port crane, ladle turret and large tonnage truck crane. Heavy machinery and so on.

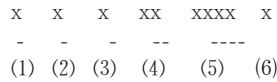
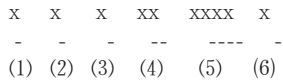


轴承型号 Bearing type			外形尺寸 Boundary dimensions			安装孔尺寸 Mounting hole diameter			结构尺寸 Structure dimensions					齿轮参数 Gear parameters					质量 Mass kg			
无齿式 Non-gear type	外齿式 External gear type	内齿式 Internal gear type	D	d	H	D1	D2	n	φ	D3	d1	h1	h2	n3	m	外齿式 Ext gear		内齿式 Int gear		b	x	
																Da mm	Z	da mm				Z
130·25·500·**	131·25·500·**	133·25·500·**	634	366	148	598	402	24	18	537	526	32	10	2X4/M10X1	5	665	130	335	68	80	+0.5	224
	132·25·500·**	134·25·500·**								474	463	32	10	2X4/M10X1	6	666	108	336	57	80	+0.5	224
130·25·560·**	131·25·560·**	133·25·560·**	694	426	148	658	462	24	18	597	586	32	10	2X4/M10X1	5	725	142	395	80	80	+0.5	240
	132·25·560·**	134·25·560·**								534	523	32	10	2X4/M10X1	6	726	118	396	67	80	+0.5	240
130·25·630·**	131·25·630·**	133·25·630·**	764	496	148	728	532	28	18	667	656	32	10	2X4/M10X1	6	810	132	456	77	80	+0.5	270
	132·25·630·**	134·25·630·**								(604)	593	32	10	2X4/M10X1	8	808	98	456	58	80	+0.5	270
130·25·710·**	131·25·710·**	133·25·710·**	844	576	148	808	612	28	18	747	736	32	10	2X4/M10X1	6	888	145	534	90	80	+0.5	300
	132·25·710·**	134·25·710·**								(684)	673	32	10	2X4/M10X1	8	888	108	536	68	80	+0.5	300
130·32·800·**	131·32·800·**	133·32·800·**	964	636	182	920	680	36	22	841	830	32	10	2X4/M10X1	8	1008	123	592	75	120	+0.5	500
	132·32·800·**	134·32·800·**								(770)	759	40	10	2X4/M10X1	10	1010	98	590	60	120	+0.5	500
130·32·900·**	131·32·900·**	133·32·900·**	1064	736	182	1020	780	36	22	941	930	40	10	2X4/M10X1	8	1104	135	688	87	120	+0.5	600
	132·32·900·**	134·32·900·**								(870)	(859)	40	10	2X5/M10X1	10	1110	108	690	70	120	+0.5	600
130·32·1000·**	131·32·1000·**	133·32·1000·**	1164	836	182	1120	880	40	22	1041	1030	40	10	2X5/M10X1	10	1220	119	780	79	120	+0.5	680
	132·32·1000·**	134·32·1000·**								(970)	(959)	40	10	2X5/M10X1	12	1224	99	780	66	120	+0.5	680
130·32·1120·**	131·32·1120·**	133·32·1120·**	1284	956	182	1240	1000	40	22	1161	1150	40	10	2X5/M10X1	10	1340	131	900	91	120	+0.5	820
	132·32·1120·**	134·32·1120·**								(1090)	1079	40	10	2X5/M10X1	12	1344	109	900	76	120	+0.5	820
130·40·1250·**	131·40·1250·**	133·40·1250·**	1445	1055	220	1393	1107	45	26	1300	1290	50	10	2X5/M10X1	12	1512	123	984	83	150	+0.5	1200
	132·40·1250·**	134·40·1250·**								(1210)	1200	50	10	2X5/M10X1	14	1512	105	980	71	150	+0.5	1200
130·40·1400·**	131·40·1400·**	133·40·1400·**	1595	1205	220	1543	1257	45	26	1450	1440	50	10	2X5/M10X1	12	1668	136	1140	96	150	+0.5	1300
	132·40·1400·**	134·40·1400·**								(1360)	1350	50	10	2X5/M10X1	14	1666	116	1134	80	150	+0.5	1300
130·40·1600·**	131·40·1600·**	133·40·1600·**	1795	1405	220	1743	1457	48	26	1650	1640	50	10	2X5/M10X1	14	1876	131	1330	96	150	+0.5	1520
	132·40·1600·**	134·40·1600·**								(1560)	1550	50	10	2X5/M10X1	16	1872	114	1328	84	150	+0.5	1520
130·40·1800·**	131·40·1800·**	133·40·1800·**	1995	1605	220	1943	1657	48	26	1850	1840	50	10	2X5/M10X1	14	2072	145	1526	110	150	+0.5	1750
	132·40·1800·**	134·40·1800·**								1760	1750	50	10	2X5/M10X1	16	2080	127	1526	96	150	+0.5	1750
131·25·2000·03			2195	1816	150	2127	1885	60	33	2041	33	13	5X3/ZG1/4in	16	2267	138	—	—	105	+0.9	1120	
	131·45·2000·04									2059	2055	54	12	3X6/M10X1	16	2304	141	1696	107	160	+0.5	2230
130·45·2000·**	131·45·2000·**	133·45·2000·**	2221	1779	231	2155	1845	60	33	2055	2033	54	12	2X6/M10X1	16	2304	141	1696	107	160	+0.5	2400
	132·45·2000·**	134·45·2000·**								(1967)	1945	54	12	2X6/M10X1	18	2304	125	1692	95	160	+0.5	2400
130·45·2240·**	131·45·2240·**	133·45·2240·**	2461	2019	231	2395	2085	60	33	2295	2273	54	12	2X6/M10X1	16	2560	157	1920	121	160	+0.5	2700
	132·45·2240·**	134·45·2240·**								(2207)	2185	54	12	2X6/M10X1	18	2556	139	1926	108	160	+0.5	2700
131·45·2500·04			2721	2279	231	2655	2345	72	33	2555	2561	54	12	3X8/M10X1	18	2826	154	—	—	160	+0.5	2834
	131·45·2500·**	133·45·2500·**								2555	2533	54	12	2X8/M10X1	18	2826	154	2178	122	160	+0.5	3000
132·45·2500·**	131·45·2500·**	133·45·2500·**	2721	2279	231	2655	2345	72	33	2467	2445	54	12	2X8/M10X1	20	2820	138	2180	110	160	+0.5	3000
	132·45·2500·**	134·45·2500·**								2855	2833	54	12	2X8/M10X1	18	3114	170	2484	139	160	+0.5	3400
130·45·2800·**	131·45·2800·**	133·45·2800·**	3021	2579	231	2955	2645	72	33	2767	2745	54	12	2X8/M10X1	20	3120	153	2480	125	160	+0.5	3400
	132·45·2800·03	134·45·2800·**								2855	2833	54	12	3X8/M10X1	20	3120	153	—	—	160	+0.5	3031
132·45·2800·12			3021	2579	231	2955	2645	72	33	2855	2833	54	12	3X8/M10X1	18	3114	170	—	—	160	+0.5	3010
	132·45·2800·**	134·45·2800·**								3213	3196	65	12	2X8/M10X1	20	3540	174	2760	139	180	0.5	5000
130·50·3150·**	131·50·3150·**	133·50·3150·**	3432	2868	270	3342	2958	72	45	3104	3087	65	12	2X8/M10X1	22	3542	158	2750	126	180	+0.5	5000
130·50·3150·12K										3103	3086	50	12	2X8/M10X1								
131·30·3150·12K			3376	2922	182	3286	3014	56	45	3190	3180	40	10	3X8/M10X1	20	3476	171			120	+0.5	2308
	131·50·3150·12K									3214	3197	50	12	2X8/ZG1/4in	20	3540	174			180	+0.5	5404
132·50·3150·12K			3432	2868	270	3342	2958	72	45	3214	3197	50	12	2X8/ZG1/4in	22	3542	158			180	+0.5	5409
	132·50·3150·12K1									3214	3197	50	12	3X8/M10X1	20	3536	174			195	+0.5	5385
133·50·3150·11K			3432	2868	270	3342	2958	60	39	3103	3086	50	12	2X8/M10X1	20			2760.54	139	180	+0.5	5174
	133·50·3150·12K									3103	3086	50	12	2X8/M10X1	20			2760.54	139	180	+0.5	5174
133·50·3150·12K1			3432	2868	270	3342	2958	72	45	3103	3086	50	12	2X8/M10X1	18			2754.44	154	180	+0.5	5174
	134·50·3150·11K									3103	3086	50	12	2X6/ZG1/4in	22			2758.66	126	180	+0.5	5104
130·50·3550·**	131·50·3550·**	133·50·3550·**	3832	3268	270	3742	3358	72	45	3613	3596	65	12	2X8/M10X1	20	3940	194	3160	159	180	+0.5	5600
	132·50·3550·**	134·50·3550·**								3504	3487	65	12	2X8/M10X1	22	3938	176	3146	144	180	+0.5	5600
132·50·3550·03K			3832	3268	270	3742	3358	72	45	3613	3596	65	12	3X8/M10X1	22	3933.6	176			180	+0.5	4960
	132·50·3550·12									3613	3596	65	12	3X8/M10X1	22	3938	176			180	+0.5	5318
130·50·4000·**	131·50·4000·**	133·50·4000·**	4282	3718	270	4192	3808	80	45	4063	4046	65	12	2X8/M10X1	22	4400	197	3608	165	180	+0.5	6400
	132·50·4000·**	134·50·4000·**								3954	3937	65	12	2X8/M10X1	25	4400	173	3600	145	180	+0.5	6400
131·50·4000·04K			4282	3718	270	4192	3908	80	45	4063	4046	65	12	2X8/M10X1	22	4400	197			180	+0.5	6377
	132·50·4000·12									4063	4046	65	12	3X8/M10X1	25	4400	173			180	+0.5	6377
130·50·4500·40	131·50·4500·**</																					

# 回转支承类型和系列二 Types and series of slewing bearings Two

回转支承编号方法:

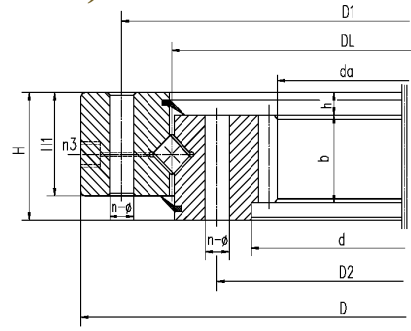
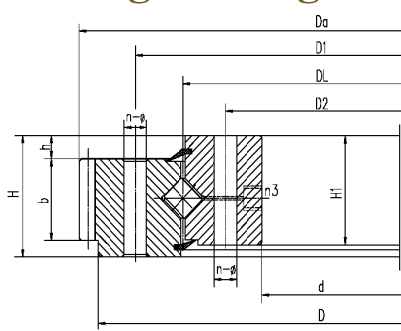
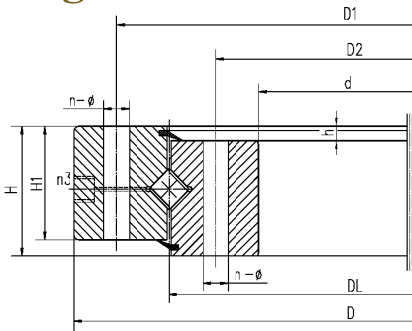
The standard slewing bearing numbering method



- (1) 回转支承代号H
- (2) 产品类别  
J-交叉滚柱式  
S-单排四点接触球式
- (3) 传动方式  
B-无齿式  
W-外齿式  
N-内齿式
- (4) 滚道体直径:(钢球或圆柱体)直径mm
- (5) 滚道中心直径mm
- (6) 齿轮模数代号:  
A-大模数  
不带A:表示小模数。

- (1) Slewing bearing code H
- (2) Product category  
J cross roller type  
S single row four point contact ball type
- (3) Meshing mode  
No gear  
External gear  
Internal gear
- (4) Rolling body diameter:Steel ball or cylindrical roller mm
- (5) Raceway center diameter
- (6) Gear modulus code  
A-Large module  
Without A: small module.

## 单排交叉滚柱式回转支承 (HJ系列) Single row cross roller slewing bearing (HJ series)



轴承型号 Bearing type			外形尺寸 Boundary dimensions			安装孔尺寸 Mounting hole diameter			结构尺寸 Structure dimensions			齿轮参数 Gear parameters							质量 Mass kg		
无齿式 Non-gear type	外齿式 External gear type	内齿式 Internal gear type	D	d	H	D1	D2	n	φ	DL	H1	h	n3	外齿式 Ext gear			内齿式 Int gear				
														x	Da mm	Z	x	da mm		Z	
HJB. 20. 625	HJW. 20. 625	HJN. 20. 625	725	525	80	685	565	18	18	625	68	12	3	60	5	+1.25	751.9	146	+0.35	498.8	101
															6	+1.00	755.5	122	+0.35	496.7	84
HJB. 20. 720	HJW. 20. 720	HJN. 20. 720	820	620	80	780	660	18	18	720	68	12	3	60	6	+1.25	860.3	139	+0.35	586.6	99
															8	+0.85	861.1	104	+0.35	582.3	74
HJB. 30. 820	HJW. 30. 820	HJN. 30. 820	940	705	95	893	749	24	20	820	83	12	4	70	6	+1.25	980.4	159	+0.35	664.5	112
															10	+0.85	986.2	95	+0.35	658	67
HJB. 30. 880	HJW. 30. 880	HJN. 30. 880	1000	760	95	956	800	24	20	880	83	12	4	70	8	+1.0	1047.5	127	+0.35	718.2	91
															10	+0.85	1046.3	101	+0.35	707.9	72
HJB. 30. 1020	HJW. 30. 1020	HJN. 30. 1020	1170	875	95	1120	930	24	22	1020	80	15	4	70	8	+1.25	1219.3	148	+0.35	830.1	105
															10	+1.00	1219.2	118	+0.35	827.8	84
HJB. 36. 1220	HJW. 36. 1220	HJN. 36. 1220	1365	1075	120	1310	1130	36	24	1220	105	15	6	90	10	+1.25	1424.9	138	+0.35	1027.8	104
															12	+0.85	1435.9	116	+0.35	1017.3	86
HJB. 36. 1250	HJW. 36. 1250	HJN. 36. 1250	1400	1090	120	1350	1150	36	26	1250	105	15	6	90	10	+0.35	1443	143	+0.35	1037	105
															12	+0.85	1449.6	117	+0.35	1028.8	87
HJB. 36. 1435	HJW. 36. 1435	HJN. 36. 1435	1595	1278	120	1535	1335	36	26	1435	105	15	6	90	12	+1.0	1655.5	134	+0.35	1221.1	103
															14	+0.85	1661.2	115	+0.35	1214.8	88
HJB. 45. 1540	HJW. 45. 1540	HJN. 45. 1540	1720	1360	140	1660	1420	42	26	1540	122	18	6	110	12	+1.4	1780.8	144	+0.35	1293.1	109
															14	+1.0	1791.1	124	+0.35	1284.8	93
HJB. 45. 1700	HJW. 45. 1700	HJN. 45. 1700	1875	1525	140	1815	1585	42	29	1700	122	18	6	110	14	+1.0	1945.4	135	+0.35	1452.7	105
															16	+1.0	1950.8	118	+0.35	1452.3	92
HJB. 45. 1880	HJW. 45. 1880	HJN. 45. 1880	2100	1665	160	2030	1740	48	32	1880	140	20	6	115	14	+1.25	2189.8	152	+0.35	1592.6	115
															18	+1.0	2194.6	118	+0.35	1579.9	89
HJB. 45. 2115	HJW. 45. 2115	HJN. 45. 2115	2325	1900	160	2245	1980	48	32	2115	140	20	6	115	16	+1.25	2406.5	146	+0.35	1804.1	114
															20	+1.0	2418.4	117	+0.35	1795.4	91
HJB. 45. 2370	HJW. 45. 2370	HJN. 45. 2370	2600	2146	180	2520	2220	48	32	2370	158	22	6	130	18	+1.25	2307.3	146	+0.35	2065.6	116
															22	+1.0	2704.4	119	+0.35	2040.9	94
HJB. 45. 2600	HJW. 45. 2600	HJN. 45. 2600	2835	2365	180	2750	2450	54	36	2600	158	22	6	130	18	+1.25	2941.7	159	+0.35	2263.5	127
															22	+1.0	2946.9	130	+0.35	2260.8	104
HJB. 50. 2820	HJW. 50. 2820	HJN. 50. 2820	3085	2555	200	3000	2640	54	36	2820	178	22	6	150	20	+1.25	3188.4	155	+0.35	2455	124
															25	+1.0	3198.4	124	+0.35	2444.1	99
HJB. 50. 3120	HJW. 50. 3120	HJN. 50. 3120	3400	2840	200	3310	2930	54	36	3120	178	22	6	150	22	+1.25	3507.2	155	+0.35	2722	125
															25	+1.25	3509.6	136	+0.35	2719	110
HJB. 50. 3580	HJW. 50. 3580	HJN. 50. 3580	3920	3240	240	3820	3340	60	40	3580	218	22	6	190	22	+1.25	4036.1	179	+0.35	3118.4	143
															25	+1.25	4035.6	157	+0.35	3118.8	126
HJB. 50. 4030	HJW. 50. 4030	HJN. 50. 4030	4370	3690	240	4270	3790	66	40	4030	218	22	6	190	22	+1.25	4520.6	201	+0.35	3558.3	163
															28	+1.25	4522	157	+0.35	3549	128
HJB. 50. 4540	HJW. 50. 4540	HJN. 50. 4540	4860	4210	240	4760	4310	72	40	4540	218	22	6	190	22	+1.25	4983	222	+0.35	4042.2	185
															30	+1.25	4992.9	162	+0.35	4042.4	136

# 单排四点接触球式回转支承(HS系列)

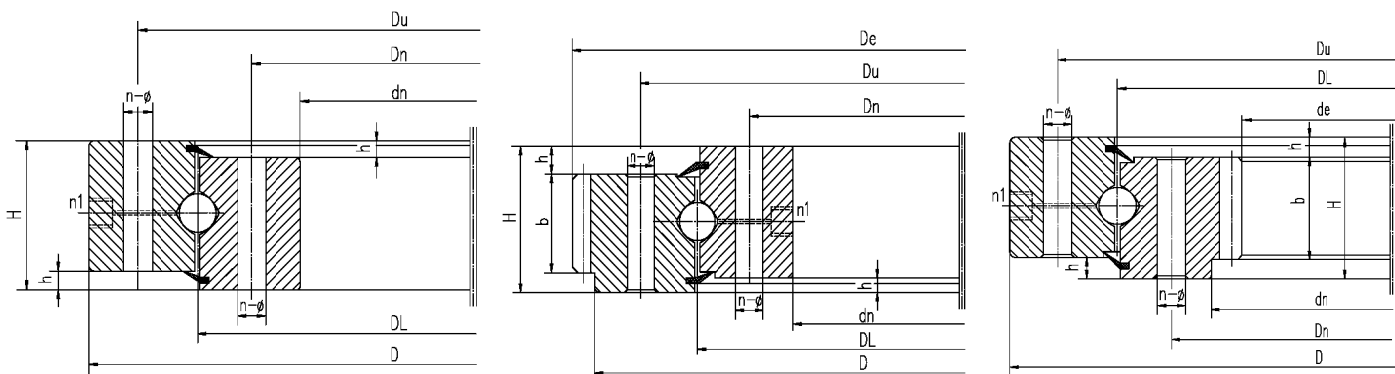
## Single row four point contact ball slewing bearing (HS Series)

### 结构特点、性能、适用范围

单排四点接触球式回转支承由两个座圈组成，结构紧凑、重量轻、钢球与圆弧滚道四点接触，能同时承受轴向力、径向力和倾翻力矩。回转式输送机、焊接操作机、中小型起重机和挖掘机等工程机械均可选用。

### Structural characteristics, performance and scope of application

The single-row four-point contact spherical slewing bearing is composed of two seat rings. It has compact structure, light weight, and four-point contact between steel ball and arc raceway. It can bear axial force, radial force and overturning moment at the same time. The construction machinery of rotary conveyor, welding manipulator, small and medium-sized crane and excavator can be selected.

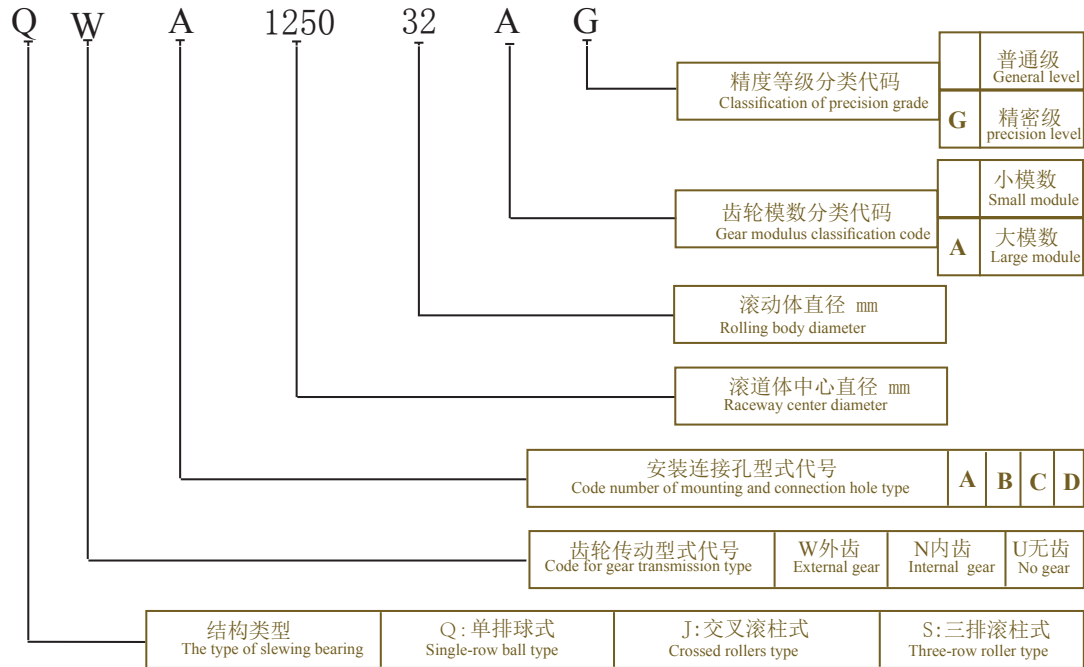


轴承型号 Bearing type			外形尺寸 Boundary dimensions			安装孔尺寸 Mounting hole diameter			结构尺寸 Structure dimensions			齿轮参数 Gear parameters						质量 Mass kg		
无齿式 Mon-gear type	外齿式 External gear type	内齿式 Internal gear type	D	dn	H	Du	Dn	n	φ	n1	DL	H	b	外齿式 Ext gear			内齿式 Int gear			
														x	De mm	Z	x		de mm	Z
HSB. 25. 625	HSW. 25. 625	HSN. 25. 625	725	525	80	685	565	18	18	3	625	12	60	5	+1.25	751.9	146	+0.35	498.8	101
	HSW. 25. 625A	HSN. 25. 625A												6	+1.00	755.5	122	+0.35	496.7	84
HSB. 25. 720	HSW. 25. 720	HSN. 25. 720	820	620	80	780	660	18	18	3	720	12	60	6	+1.25	860.3	139	+0.35	586.6	99
	HSW. 25. 720A	HSN. 25. 720A												8	+0.85	861.1	104	+0.35	582.3	74
HSB. 30. 820	HSW. 30. 820	HSN. 30. 820	940	705	95	893	749	24	20	4	820	12	70	6	+1.25	980.4	159	+0.35	664.5	112
	HSW. 30. 820A	HSN. 30. 820A												10	+0.85	986.2	95	+0.35	658	67
HSB. 30 (32) . 880	HSW. 30 (32) . 880	HSN. 30 (32) . 880	1000	760	95	956	800	24	20	4	880	12	70	8	+1.0	1047.5	127	+0.35	718.2	91
	HSW. 30 (32) . 880A	HSN. 30 (32) . 880A												10	+0.85	1046.3	101	+0.35	707.9	72
HSB. 30(32) . 1020	HSW. 30(32) . 1020	HSN. 30(32) . 1020	1170	875	95	1120	930	24	22	4	1020	15	70	8	+1.25	1219.3	148	+0.35	830.1	105
	HSW. 30(32) . 1020A	HSN. 30(32) . 1020A												10	+1.00	1219.2	118	+0.35	827.8	84
HSB. 30(40) . 1220	HSW. 30(40) . 1220	HSN. 30(40) . 1220	1365	1075	120	1310	1130	36	24	6	1220	15	90	12	+0.85	1435.9	116	+0.35	1017.3	86
	HSW. 30(40) . 1220A	HSN. 30(40) . 1220A												10	+0.35	1443	143	+0.35	1037	105
HSB. 35(40) . 1250	HSB. 35(40) . 1250	HSN. 35(40) . 1250	1400	1090	120	1350	1150	36	26	6	1250	15	90	12	+0.85	1449.6	117	+0.35	1028.8	87
	HSW. 35(40) . 1250A	HSN. 35(40) . 1250A												12	+1.0	1655.5	134	+0.35	1221.1	103
HSB. 35(40) . 1435	HSW. 35(40) . 1435	HSN. 35(40) . 1435	1595	1278	120	1535	1335	36	26	6	1435	15	90	14	+0.85	1661.2	115	+0.35	1214.8	88
	HSW. 35(40) . 1435A	HSN. 35(40) . 1435A												12	+1.4	1780.8	144	+0.35	1293.1	109
HSB. 35(50) . 1540	HSW. 35(50) . 1540	HSN. 35(50) . 1540	1720	1360	140	1660	1420	42	26	6	1540	18	110	14	+1.0	1791.1	124	+0.35	1284.8	93
	HSW. 35(50) . 1540A	HSN. 35(50) . 1540A												14	+1.0	1791.1	124	+0.35	1284.8	93
HSB. 35(50) . 1700	HSW. 35(50) . 1700	HSN. 35(50) . 1700	1875	1525	140	1815	1585	42	29	6	1700	18	110	14	+1.0	1945.4	135	+0.35	1452.7	105
	HSW. 1700. (50) 35A	HSN. 35(50) . 1700A												16	+1.0	1950.8	118	+0.35	1452.3	92
HSB. 40(50) . 1880	HSW. 40(50) . 1880	HSN. 40(50) . 1880	2100	1665	160	2030	1740	48	32	6	1880	20	115	14	+1.25	2189.8	152	+0.35	1592.6	115
	HSW. 40(50) . 1800A	HSN. 40(50) . 1880A												18	+1.0	2194.6	118	+0.35	1579.9	89
HSB. 40(50) . 2115	HSW. 40(50) . 2115	HSN. 40(50) . 2115	2325	1900	160	2245	1980	48	32	6	2115	20	115	16	+1.25	2406.5	146	+0.35	1804.1	114
	HSW. 40(50) . 2115A	HSN. 40(50) . 2115A												20	+1.0	2418.4	117	+0.35	1795.4	91
HSB. 40(60) . 2370	HSW. 40(60) . 2370	HSN. 40(60) . 2370	2600	2146	180	2520	2220	48	32	6	2370	22	130	18	+1.25	2307.3	146	+0.35	2065.6	116
	HSW. 40(60) . 2370A	HSN. 40(60) . 2370A												22	+1.0	2704.4	119	+0.35	2040.9	94
HSB. 40(60) . 2600	HSW. 40(60) . 2600	HSN. 40(60) . 2600	2835	2365	180	2750	2450	54	36	6	2600	22	130	18	+1.25	2941.7	159	+0.35	2263.5	127
	HSW. 40(60) . 2600A	HSN. 40(60) . 2600A												22	+1.0	2946.9	130	+0.35	2260.8	104
HSB. 50 (60) . 2820	HSW. 50 (60) . 2820	HSN. 50 (60) . 2820	3085	2555	200	3000	2640	54	36	6	2820	22	150	20	+1.25	3188.4	155	+0.35	2455	124
	HSW. 50 (60) . 2820A	HSN. 50 (60) . 2820A												25	+1.0	3198.4	124	+0.35	2444.1	99
HSB. 50 (6) . 3120	HSW. 50 (60) . 3120	HSN. 50 (60) . 3120	3400	2840	200	3310	2930	54	36	6	3120	22	150	22	+1.25	3507.2	155	+0.35	2722	125
	HSW. 50 (60) . 3120A	HSN. 50 (60) . 3120A												25	+1.25	3509.6	136	+0.35	2719	110
HSB. 50 (60) . 3580	HSW. 50 (60) . 3580	HSN. 50 (60) . 3580	3920	3240	240	3820	3340	60	40	6	3580	22	190	22	+1.25	4036.1	179	+0.35	3118.4	143
	HSW. 50 (60) . 3580A	HSN. 50 (60) . 3580A												25	+1.25	4035.6	157	+0.35	3118.8	126
HSB. 50 (6) . 4030	HSW. 50 (60) . 4030	HSN. 50 (60) . 4030	4370	3690	240	4270	3790	66	40	6	4030	22	190	22	+1.25	4520.6	201	+0.35	3558.3	163
	HSW. 50 (60) . 4030A	HSN. 50 (60) . 4030A												28	+1.25	4522	157	+0.35	3549	128
HSB. 50 (60) . 4540	HSW. 50 (60) . 4540	HSN. 50 (60) . 4540	4860	4210	240	4760	4310	72	40	6	4540	22	190	22	+1.25	4983	222	+0.35	4042.2	185
	HSW. 50 (60) . 4540A	HSN. 50 (60) . 4540A												30	+1.25	4992.9	162	+0.35	4042.4	136

# 回转支承类型和系列三

## Types and series of slewing bearings Three

JB/T10839-2008 标准回转支承编号方法: JB/T10839-2008 Standard slewing bearing numbering method



说明: 1. 无齿式(QU)系列外形尺寸由相同滚道中心直径的内齿式D和外齿式dn组成, 其堵塞与油孔布置在外圈上;

Explanation: 1. The dimensions of the No gear (QU) series are composed of Internal gear D and External gear dn with the same raceway center diameter, and The plug position and oil holes are arranged on the outer ring.

2. 安装连接孔型式代号

The plug position and oil holes are arranged on the outer ring.

A: 内、外套圈均为光孔

Inner and outer rings are light holes.

B: 内、外套圈基面均为螺纹孔, 深度为T (安装孔螺纹T可在孔的另一端)

The base of the inner and outer rings are threaded holes with a depth of T (the mounting hole T at the other end of the hole).

C: 外套圈基面螺纹孔, 深度为T, 内套圈为光孔 (安装孔螺纹T可在孔的另一端)

The base of outer rings is threaded holes with a depth of T, the inner ring is the light hole (the mounting hole T is at the other end of the hole).

D: 内套圈基面螺纹孔, 深度为T, 外套圈为光孔 (安装孔螺纹T可在孔的另一端)

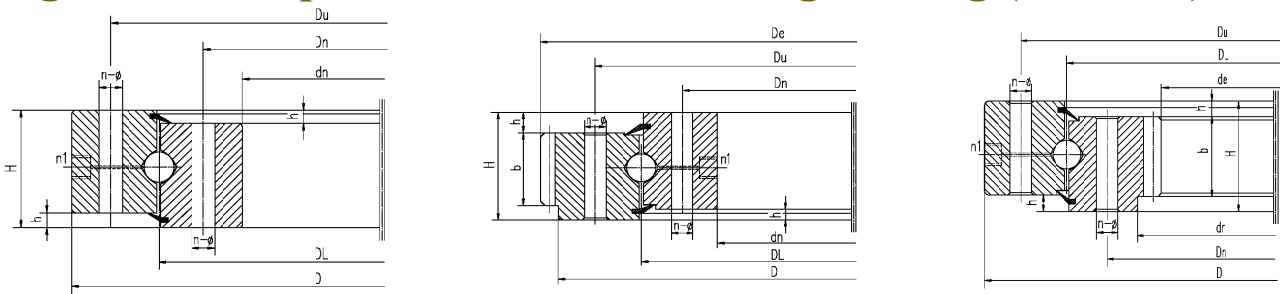
The base of inner ring is threaded holes with a depth of T, the outer rings is the light hole (the mounting hole T is at the other end of the hole).

3. 外齿式(QW)结构图、内齿式(QN)结构图和无齿式(QU)结构图如下:

The External gear type (QW) structure diagram, the Internal gear type (QN) structure diagram and the No gear (QU) structure diagram are as follows:

### 单排四点接触球式回转支承(Q系列)

### Single row four point contact ball slewing bearing (Q Series)



44	2800.60	2992	2604	2996	2608	150	2926	2674	66	33	M30	56	6	14	122	18	3078	170	1817	2502	140	1871
	2800.60A															20	3100	154	1904	2500	126	1857
45	3150.60	3342	2954	3346	2958	150	3276	3024	72	33	M30	56	6	14	122	20	3440	171	2087	2840	143	2144
	3150.60A															22	3454	156	2139	2838	130	2129
46	3550.60	3742	3354	3746	3358	150	3676	3424	78	33	M30	56	6	14	122	20	3840	191	2355	3240	163	2425
	3550.60A															25	3875	154	2500	3225	130	2437
47	4000.60	4200	3804	4196	3808	150	4126	3874	80	33	M30	56	6	14	122	22	4312	195	2787	3696	169	2683
	4000.60A															25	4325	172	2827	3675	148	2763
48	4500.60	4700	4304	3316	2988	150	4626	4374	86	33	M30	56	6	14	122	25	4825	192	3268	4175	168	3247
	4500.60A															28	4816	172	3372	4172	150	3334

序号	轴承型号 Bearing type		外形尺寸 Boundary dimensions				安装孔尺寸 Mounting hole diameter					结构尺寸 Structure dimensions		齿轮参数 Gear parameters										
	QW, QN, QU 系列 QW, QN, QU series		外齿式 External gear type		内齿式 Internal gear type		H	Du	Dn	n	通孔 Through hole A型		螺孔 Screw holes B, C, D型		n1 油杯 数量 Number of oil holes	h	b	m 模数 Modulus	外齿式 External gear type			内齿式 Internal gear type		
	D	dn	D	d	φ	d1					T	De	Z	质量 weight					de	Z	质量 weight			
			mm		mm		mm		mm		mm		mm		mm		mm		kg		kg			
1	280.16	360	198	360	200	60	328	232	10	15	M14	28	2	10	44			3.5	385	109	29	178.5	52	27
	4																	388	96	29	176	45	27	
2	315.16	395	233	397	235	60	363	267	12	15	M14	28	2	10	44			3.5	423.5	120	34	213.5	62	31
	4																	424	105	34	212	54	31	
3	355.16	435	273	437	275	60	403	307	12	15	M14	28	2	10	44			3.5	458.5	131	37	252	73	34
	4																	460	115	38	252	64	34	
4	400.16	480	318	482	320	60	448	352	12	15	M14	28	2	10	44			3.5	504	143	45	297.5	86	42
	4																	504	125	46	296	75	43	
5	450.16	530	368	532	370	60	498	402	12	15	M14	28	2	10	44			3.5	553	157	51	346.5	100	50
	4																	556	138	52	344	87	51	
6	450.20	544	354	546	354	70	508	392	12	17	M16	30	2	10	50			4	572	142	65	328	83	62
	5																	570	113	64	325	66	62	
7	500.20	594	404	596	404	70	558	442	14	17	M16	30	2	10	50			4	624	155	74	376	95	70
	5																	625	124	74	375	76	70	
8	560.20	654	464	656	468	70	618	502	14	17	M16	30	2	10	50			4	680	169	78	440	111	76
	5																	685	136	79	435	88	77	
9	630.20	724	534	726	538	70	688	572	16	17	M16	30	2	10	50			4	748	186	86	512	129	84
	5																	755	150	88	505	102	86	
10	710.20	804	614	806	618	70	768	652	18	17	M16	30	2	10	50			5	835	166	99	585	118	97
	6																	840	139	101	582	98	97	
11	800.20	894	704	896	708	70	858	742	20	17	M16	30	2	10	50			6	930	154	114	672	113	110
	8																	936	116	114	664	84	111	
12	630.25	734	522	738	522	78	694	566	16	22	M20	36	2	10	58			5	770	153	113	490	99	107
	6																	774	128	114	486	82	107	
13	710.25	814	602	818	602	78	774	646	18	17	M20	36	2	10	58			6	858	142	131	564	95	122
	8																	864	107	132	560	71	122	
14	800.25	904	692	908	694	78	864	736	18	22	M20	36	2	10	58			6	942	156	143	654	110	142
	8																	952	118	147	648	82	142	
15	900.25	1004	792	1008	794	78	964	836	20	22	M20	36	2	10	58			8	1048	130	162	744	94	163
	10																	1060	105	168	740	75	162	
16	1000.25	1104	892	1108	894	78	1064	936	24	22	M20	36	2	10	58			8	1152	143	182	848	107	178
	10																	1160	115	185	840	85	179	
17	1120.25	1124	1012	1228	1014	78	1184	1056	28	22	M20	36	2	10	58			8	1280	159	213	968	122	197
	10																	1280	127	210	960	97	201	
18	800.32	920	676	924	680	90	874	726	18	24	M22	40	2	10	70			8	976	121	211	632	80	196
	10																	980	97	212	630	64	195	
19	900.32	1020	776	1024	780	90	974	826	20	24	M22	40	2	10	70			8	1072	133	235	720	91	229
	10																	1080	107	239	720	73	227	
20	1000.32	1120	876	1124	880	90	1074	926	24	24	M22	40	2	10	70			8	1160	144	227	832	105	230
	10																	1170	116	232	830	84	227	
21	1120.32	1240	996	1244	1000	90	1194	1046	28	24	M22	40	4	10	70			10	1300	129	272	940	95	263
	12																	1308	108	275	936	79	262	
22	1250.32	1370	1126	1374	1130	90	1324	1176	32	24	M22	40	4	10	70			10	1430	142	302	1070	108	294
	12																	1440	119	309	1068	90	290	
23	1400.32	1520	1276	1524	1280	90	1474	1326	36	24	M22	40	4	10	70			12	1584	131	337	1212	102	333
	14																	1596	113	347	1204	87	336	
24	900.40	1040	758	1044	760	102	986	814	20	26	M24	45	4	12	80			10	1100	109	304	700	71	288
	12																	1104	91	305	696	59	289	
25	1000.40	1140	858	1144	860	102	1086	914	24	26	M24	45	4	12	80			10	1200	119	336	800	81	321
	12																	1212	100	347	792	67	324	
26	1120.40	1260	978	1264	980	102	1206	1034	282	26	M24	45	4	12	80			10	1320	131	374	920	93	359
	12																	1332	110	386	912	77	363	
27	1250.40	1390	1108	1394	1110	102	1336	1164	32	26	M24	45	4	12	80			10	1450	144	396	1050	106	388
	12																	1452	120	392	1044	88	388	
28	1400.40	1540	1258	1544	1260	102	1486	1314	36	26	M24	45	4	12	80			12	1608	133	448	1188	100	444
	14																	1610	114	443	1190	86	434	
29	1600.40	1740	1458	1744	1460	102	1686	1514	40	26	M24	45	4	12	80			12	1812	150	528	1392	117	509
	14																	1820	129	534	1386	100	511	
30	1800.40	1940	1658	1944	1660	102	1886	1714	44	26	M24	45	4	12	80			14	2016	143	583	1582	114	576
	16																	2032	126	607	1568	99	591	
31	2000.40	2140	1858	2144	1960	102	2086	1914	48	26	M24	45	4	12	80			14	2226	158	714	1778	128	675
	16																	2224	138	727	1776	112	673	
32	1250.50	1412	1084	1416	1088	124	1354	1146	32	30	M27	50	4	12	100			12	1476	122	583	1008	85	581
	14																	1484	105	592	1008	73	577	
33	1400.50	1562	1234	1566	1238	124	1504	1296	36	30	M27	50	4	12	100			12	1632	135	665	1164	98	645
	14																	1638	116	670	1162	84	643	
34	1600.50	1762	1434	1766	1438	124	1704	1496	40	30	M27	50	4	12	100			12	1824	151	714	1368	115	714
	14																	1834	130	727	1358	98	723	
35	1800.50	1962	1634	1966	1638	124	1904	1696	44	30	M27	50	4	12	100									

# 回转支承类型和系列四 Types and series of slewing bearings Four

本代号方法是沿用原国家标准轴承代号方法。由前置代号，基本代号和后置代号组成  
This designation method follows the previous China national bearing standard. It consists of a prefix code, basic code and suffix code.

(1) 前置代号

转盘轴承精度等级分为G, E, D三级，一般普通级G可以不标准。

(1) Prefix Code

The precision grade of slewing bearing has three grades: Grade G, Grade E, Grade D. Grade G is generally the standard specification and is not normally shown.

(2) 基本代号

基本代号由七位阿拉伯数字组成，数字代表的意义见下表

(2) Basic Code

The basic code consists of 7 numbers, the explanation for these numbers are referred to in the table below

轴承内径d (mm) Inner diameter d(mm)	代号方法 Designation method	示例 Samples	
		轴承型号 Bearing type	内径 (mm) Inner diameter(mm)
<500	1. 内径除以5之商数表示 Expressed by the quotient of dividing inner diameter by 5. 2. 内径为小数或者不能被5整除时，用分数表示，分母直接表示内径尺寸 When the inner diameter is decimal or could not be divided exactly by 5, it will be expressed by a fraction, and the denominator directly indicates the dimension of inner diameter	79764	320
		797/496	496
		797/488.5	488.5
≥500	用分数表示 分母直接表示内径尺寸 Expressed by fraction, and the denominator directly indicates the dimension of inner diameter	797/800	800

(3) 后置代号: 转盘轴承常用的后置代号见表

(3) Suffix Code: Common suffix codes used in slewing bearing designations are shown in the table below

符号 Code	定义 Definition
G, G2, ...	其中: G表示套圈材料为5CrMnMo: In which: G indicates the material of bearing ring is 5CrMnMo: G2表示套圈材料为50Mn: 无代号时套圈材料为42CrMo G2 indicates the material of bearing rings is 50Mn: the material of bearing ring is 42CrMo, when there is no code.
K, K1, K2...	轴承结构与标准结构有差异 Classification for nonstandard structure
M	有摩擦力矩要求的 Requirement for friction moment
Y, Y1, Y2...	轴承技术有变化 Changes in bearing technique

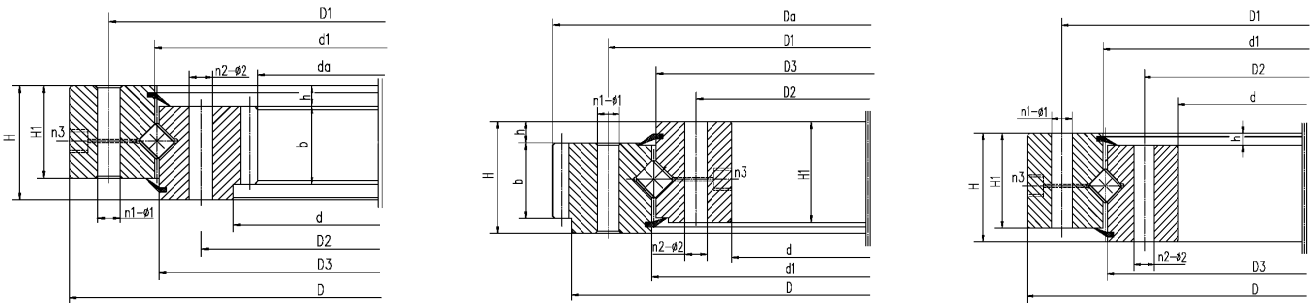
示例: E(0)1792/885 G2 K 表示:

- E—精度等级, E级:
- 0—宽度系列, 0系列, 0可省略:
- 17—结构型式, 外齿式交叉圆柱滚子轴承:
- 9—类型, 9类:
- 2—直径系列, 2系列:
- 885—轴承内径: 885mm:
- G2—材料, 套圈材料50Mn:
- K—轴承结构与标准结构有差异:

Example: E(0) 1792/885 G2 K

- E—Precision grade, Grade E.
- 0—Width series, series 0, 0 (could be omitted)
- 17—Structural design, cross cylindrical roller bearing with external gear.
- 9—Type, category 9.
- 2—Diameter series, series 2.
- 885—Inner diameter: 885mm
- G2—Material, IR and OR manufactured from 50Mn
- K—Bearing structure differs from the standard structure.

## 单排交叉滚柱式回转支承 (797系列) Single row cross roller slewing bearing (797 series)



轴承型号 Bearing type	外形尺寸 Boundary dimensions			安装孔尺寸 Mounting hole diameter				结构尺寸 Structure dimensions						齿轮参数 Gear parameters				质量 Mass kg			
	D	d	H	D1	D2	n1	n2	φ1	φ2	D3	d1	H1	h	n3	φ3	m	da		Z	b	x
内齿式 Internal gear type	mm			mm				mm						mm							
2797/760G2	1000	760	95	956	800	24	24	20	20	878	1027	100	15	2	M10X1	8	718	91	70	0.35	206
2797/870G2	1180	870	115	1125	920	18	18	26	26	1023	1027	100	15	2	M8x1	8	828.8	105	90	0.3	374
2797/875G2	1170	875	95	1120	930	24	24	22	22	1018	1022	82	10	4	M10X1	8	830	105	70	0.35	297
2797/955G2	1200	955	90	1160	1000	36	18	18	18	1088	1092	76	10	4	M8x1	8	908	115	72	0.3	245
2797/1010G2	1200	1010	90	1160	1041	36	20	22	M20	1088	1092	76	10	2	M8x1	10	962	97	72	0.6	199
2797/1010GK	1200	1010	90	1160	1041	36	20	22	M20	1088	1092	76	10	2	M8x1	10	962	97	72	0.6	199
1278/2797G2	1595	1278	120	1535	1335	36	36	26	26	1428	1432	106	14	6	M10X1	12	1221	103	90	0.35	585
2797/1400G2K	1715	1400	110	1660	1460	40	40	26	M24	1558	1562	95	15	4	M10X1	10	1330	135	90	0	587
2797/2000G2	2420	2000	160	2350	2070	48	48	33	M30	2207	2213	140	20	6	M10X1	14	1913	138	120	0.3	1607
2797/2240G	2670	2240	160	2600	2320	54	54	35	M36	2457	2463	140	20	6	M12X1.25	16	2154.5	136	120	0.3	1798
3-940G	2800	2300	208	2710	2390	42	48	38	M36	2535	2545	180	18	6	M10X1	20	2162.75	110	175	0	2756
2797/2680G	3325	2680	300	3242	2754	32	32	33	33	2996	3000	270	30	4	M16X1.5	16	2592	164	180	0	6320
2797/2680GY	3325	2680	300	3242	2754	48	48	33	33	2996	3000	270	30	4	M16X1.5	16	2592	164	180	0	6320
2797/2680GK	3325	2680	300	3242	2754	32	32	33	33	2996	3000	270	30	4	M16X1.5	16	2592	164	180	0	6641
3-943G2	3850	3322	200	3720	3420	60	60	45	45	3568	3572	180	20	12	Z1/4in	22	3206	147	158	0.35	4520

轴承型号 Bearing type	外形尺寸 Boundary dimensions			安装孔尺寸 Mounting hole diameter						结构尺寸 Structure dimensions						齿轮参数 Gear parameters					质量 Mass kg
	mm			mm				mm	mm	mm				mm		mm	mm		mm		
1791/885	1056	885	83	1032	925	16	16	M16	17.5	986	988	75	12.5			8	1096	135	62.5	0	172
E1791/885	1056	885	83	1032	925	16	16	M16	17.5	986	988	75	12.5			8	1096	135	62.5	0	172
E1791/885K	1056	885	83	1032	925	16	16	M16	17.5	986	988	75	12.5	3	M10X1	8	1096	135	62.5	0	172
1797/885G	1150	885	115	1115	935	16	16	18	18	1023	1027	100	15	4	M8x1	5	1180	234	80	0	330
1797/1100G	1415	1100	115	1345	1160	24	18	21	21	1253	1255	100	15	4	M12X1.25	6	1452	240	84	0	497
1798/1100G2	1400	1100	140	1352	1160	26	26	24	26	1260	1264	126	21	4	M10X1	14	1477.28	104	90	-0.24	642
1798/1100G2K	1400	1100	145	1352	1160	26	26	24	26	1260	1264	131	26	4	M10X1	14	1477.28	104	90	-0.24	644
1250/1797G2	1548	1250	148	1512	1297	16	16	25	25	1403	1407	122	20	4	M10X1	12	1608	132	100	0	661
1797/1400G2	1595	1278	120	1535	1335	36	36	26	26	1428	1432	105	15	4	M10X1	12	1655.46	134	90	1.15	597
1797/1300G2	1705	1300	165	1644	1360	24	24	32	32	1504	1508	134	31	4	M10X1	14	1783.6	126	85	-0.3	1023
1792/1400G	1715	1400	110	1660	1460	42	42	26	26	1558	1562	95	17	4	M12X1.25	12	1780.8	147	78	-0.3	597
1792/1400G2	1715	1400	110	1660	1460	42	42	26	26	1558	1562	95	17	4	M12X1.25	12	1881.6	147	78	-0.3	597
1792/1400G2K	1715	1400	110	1660	1460	42	42	26	26	1558	1562	95	17	4	M12X1.25	12	1780.8	147	78	-0.3	597
1797/1460G2	1800	1460	125	1735	1525	32	36	26	26	1633	1637	110	10	4	M10X1	14	1881.6	133	95	0.3-	828
1797/1460G2K		1460	125	1735	1525	32	36	26	26	1633	1637	110	10	4	M10X1	10	1880	186	115	0	845
1797/1916G2		1916	150	2245	1980	42	42	34	34	2113	2117	130	15	3	M10X1	18	2415.6	133	135	-0.4	1597
1797/2100G2	2600	2100	180	2540	2200	48	48	32	32	2368	2372	158	22	8	M10X1	18	2700	148	130	0	2395
1797/2100G2K	2600	2100	180	2540	2200	48	48	32	32	2368	2372	158	22	8	M10X1	18	2700	148	130	0	2392
1797/2460G2		2460	220	2930	2560	30	30	33	34	2785		185	20	30	M12X1.25	14	3108	220	200	0	4091
1797/2460G2U		2460	220	2930	2560	30	30	33	34	2745	2747	185	20	30	M12X1.25	14	3108	220	200	0	4091
1797/2460G2K		2460	220	2930	2560	30	30	33	34	2875		185	35	15	ZG1/4in	14	3108	220	200	0	4091
1797/2460G2K1		2460	220	2930	2560	30	30	33	34	2875		185	35	30	ZG1/4in	14	3108	220	200	0	4091
1797/2500G2		2500	210	2990	2630	36	36	37	37	2818	2822	200	10	12	M14X1.5	25	3250	128	200	0	4597
1797/2500K	2920	2500	260	3060	2622	36	36	40	40	2949	2916	240	60	36	ZG1/4in	18	3258	179	190	0	5407
1797/2500G2K1	2920	2500	260	3060	2622	36	36	40	40	2949	2916	240	60	36	ZG1/4in	18	3258	179	190	0	5407
1797/2600G		2600	200	3050	2700	60	60	35	35	2868	2872	180	20	6	M12X1.25	20	3232.8	160	180	-0.18	3936
1797/2600G2		2600	200	3050	2700	60	60	35	35	2868	2872	180	20	6	ZG1/4in	20	3232.8	160	180	-0.18	3936
1797/2600G2K		2600	200	3050	2700	60	60	35	35	2868	2872	180	20	4	14	20	3232.8	160	180	-0.18	3936
1797/2600G2K1		2600	200	3050	2700	60	60	35	35	2868	2872	180	20	8	M10X1	20	3232.8	160	180	-0.18	3936
1797/2635G	3332	2635	270	3240	2755	36	36	42	42	2998	3002	240	45	6	M12X1.25	20	3440	170	200	0	5937
1797/2635G	3332	2635	270	3240	2755	36	36	42	42	2998	3002	225	30	12	ZG1/4in	20	3440	170	200	0	5937
1797/3230G	3970	3230	240	3820	3350	52	54	37	37	3578	3582	220	20	9	M12X1.25	25	4100	162	200	0	7612
1797/3230GY	3970	3230	240	3820	3380	52	36	37	37	3578	3582	220	20	4	M12X1.25	25	4100	162	200	0	7612
1797/3230G2	3970	3230	240	3820	3350	52	54	37	37	3578	3582	220	20	9	M12X1.25	25	4100	162	200	0	7613
1797/3230G2K	3970	3230	240	3820	3350	52	54	37	37	3578	3582	220	20	8	14	25	4100	162	200	0	7613
1797/3230G2K2	3970	3230	240	3820	3350	52	54	37	37	3578	3582	220	20	18	M12X1.25	22	4092	184	200	0	7804
1797/3230G2K3	3940	3230	240	3820	3350	52	54	37	37	3578	3582	220	20	9	M12X1.25	20	4080	202	200	0	7302
1797/3230G2Y	3970	3230	240	3820	3380	52	36	37	37	3578	3582	220	20	4	M12X1.25	25	4100	162	200	0	7613
1797/3230G2Y2	3970	3230	240	3820	3380	52	36	37	37	3578	3582	220	20	4	M12X1.25	25	4100	162	200	0	7613
1797/3230G2Y3		3230	240	3820	3380	52	36	37	37	3578	3582	220	20	4	M14X1.5	25	4100	162	220	0	7686
1797/3230GK4	3970	3230	240	3820	3380	52	68	37	37	3578	3582	220	20	18	M14X1.5	25	4100	162	200	0	7613
1797/3230GK5	3970	3230	240	3820	3350	52	54	37	37	3578	3582	220	20	4	M12X1.25	25	4100	162	200	0	7613
1797/3230G2Y3K		3230	240	3820	3380	52	36	37	37	3578	3582	220	20	4	M12X1.25	25	4100	162	220	0	7686
1797/3760G	4220	3760	240	4160	3840	48	48	32	32	3996	4004	210	55	4	M14X1.5	14	4326	307	135	0	4396
1797/4250G	4940	4250	250	4840	4350	72	72	48	48	4598	4602	225	25	9	M16X1.5	30	5082	168	200	-0.3	8654

轴承型号 Bearing type	外形尺寸 Boundary dimensions			安装孔尺寸 Mounting hole diameter						结构尺寸 Structure dimensions						质量 Mass kg					
																	D	d	H	D1	D2
	mm			mm				mm	mm	mm				mm							
79764	550	320	85	515	365	12	8	17	18	438	442	75	10	---	---	---	---	---	---	---	85.6
797/600G2	900	600	125	848	690	30	29	26	M24	750	754	105	15	3	M10X1						246
797/670	907	670	85	870	730	12	8	M16	18	808	812	75	10	---	---	---	---	---	---	---	170
700/797G	1000	700	140	940	770	24	24	M20	22	879	882	130	20	4	M10X1						370
797/845G2	1150	845	130	1100	895	24	24	22	22	1024	1030	105	10	6	M6						393
797/870G	1180	870	115	1125	920	18	18	28	28	1023	1027	100	15	2	M8x1						355
870/787K	1180	870	115	1125	920	18	18	28	28	1023	1027	100	15	2	M10X1						355
870/787G2K1	1180	870	115	1125	920	18	18	28	28	1023	1027	100	15	2	M10X1						355
797/962G2	1200	962	90	---	---	---	---	---	---	1088	1092	76	10	---	---	---	---	---	---	---	224
792/1000G2	1270	1000	100	1220	1050	36	36	19	19	1132	1138	85	15	4	M10X1						303
792/1000G2K	1270	1000	100	1220	1050	36	36	19	19	1132	1138	85	15	3	9						303
792/1000G2K1	1270	1000	100	1220	1050	36	36	19	19	1132	1138	85	15	---	---	---	---	---	---	---	303
792/1000G2K2	1270	1000	100	1220	1050	36	36	19	19	1132	1138	85	15	---	---	---	---	---	---	---	303
797/1060G2	1400	1060	120							1248	1252	120									596
1200/797G2	1520	1200	90							1356	1364	90									504
792/1250G2	1700	1250	155	1650	1330	24	24	26	26	1446	1450	140	10	6	M10X1						1103
797/1250G2	1608	1250	148	1512	1297	16	16	25	25	1403	1047	128	26	4	M10X1						743
797/1250G2K	1608	1250	148	1512	1297	16	16	25	25	1403	1047	128	26	4	M10X1						717
797/1278G2K	1660	1278	120	1535	1335	18	18	26	26	1428	1432	105	15	4	M10X1						589
797/1320G2	1715	1320	134	1337	1163																